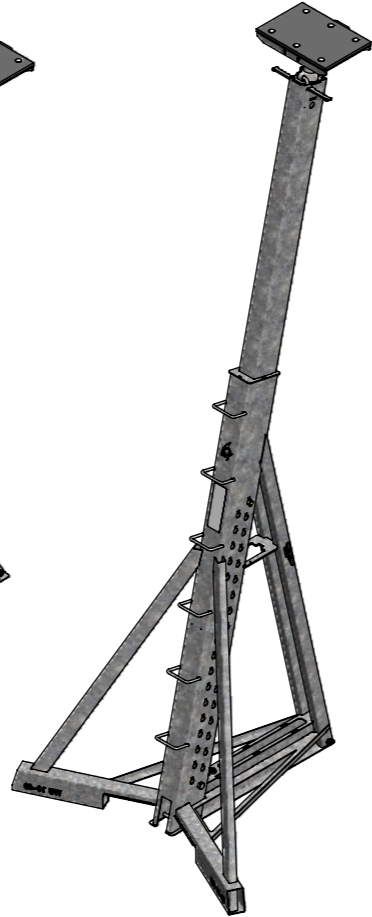
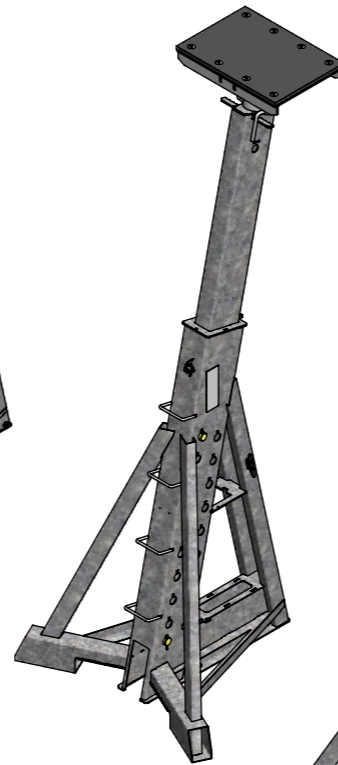


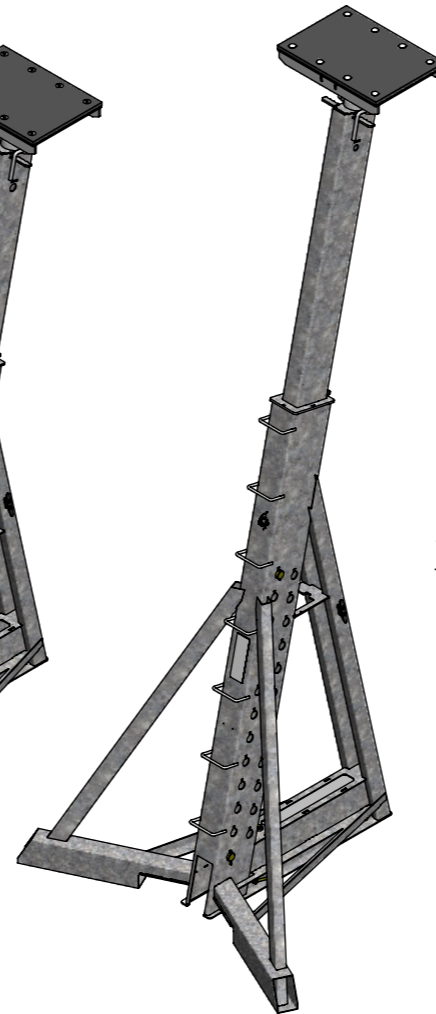
WORKUP 10-30



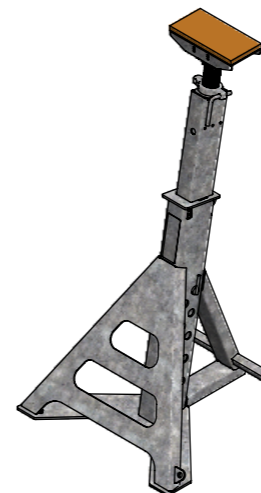
WORKUP 10-40



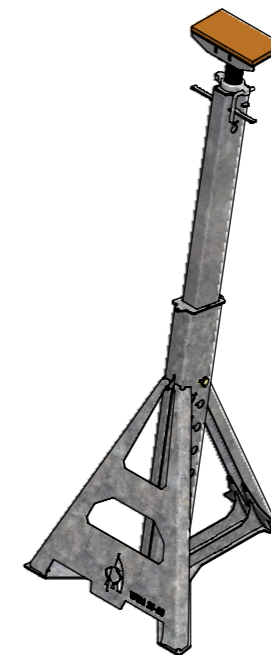
WORKUP 20-32



WORKUP 20-43



WORKUP MOTEUR 20-20



WORKUP MOTEUR 20-28

GAMME WORKUP / WORKUP RANGE

NOTICE ORIGINALE GAMME WORKUP

WORKUP RANGE ORIGINAL INSTRUCTIONS



2107-WU_NOV1.1

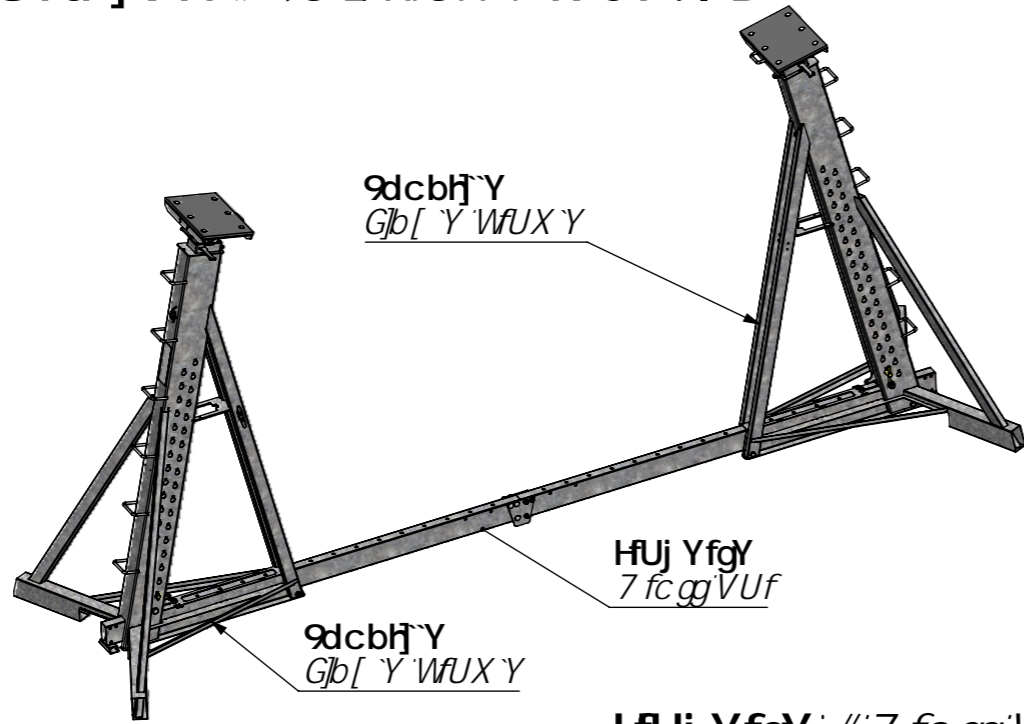
JL - 25/10/2021

A6

1:30



8Ya]VYf #\ U Z WfUX Y K CF?I D



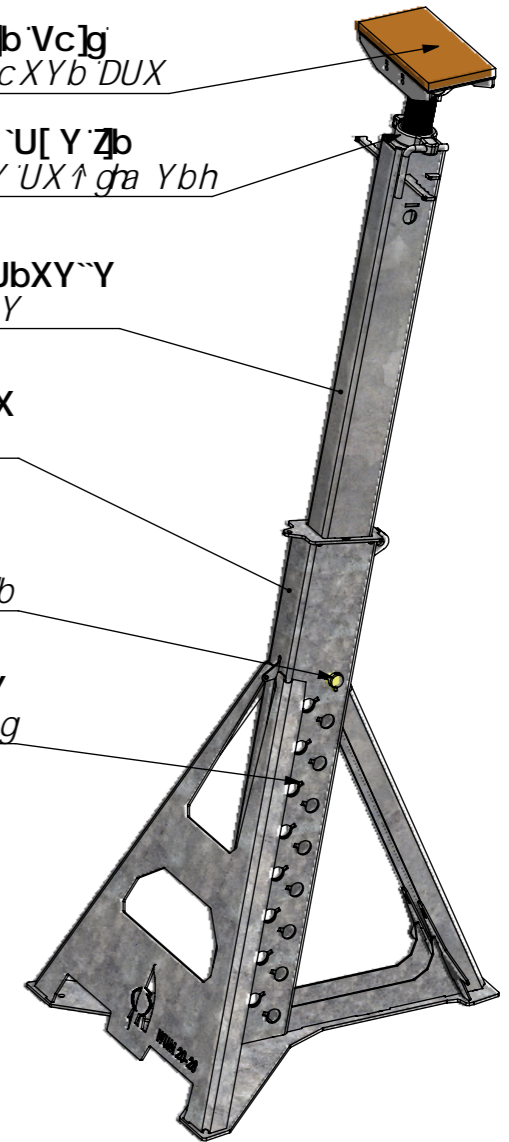
9dcbh`Y #Gjb[`Y WfUX`Y K CF?I D A CH F

DUHb `Vc]g
K ccXYb`DUX

Ff[`U[Y`Zb
:]bY`UX↑ ga`Ybh

7 \UbXY`Y
H VY

DjYX
@[



6fcVX`Y #H VY`D]b

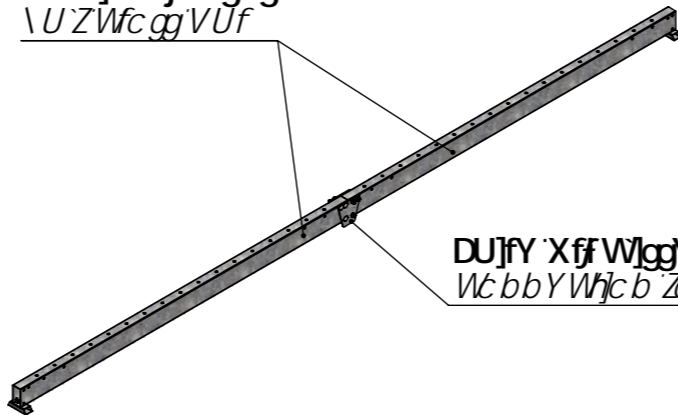
Hci gXY`f[`U[Y
UX↑ ga`Ybh\`c`Yg

9dcbh`Y #Gjb[`Y WfUX`Y K CF?I D

HfUj YfgY #7 fc gg VUf K CF?I D`

8Ya] HfUj YfgYg
\ U Z Wf c gg VUf

DU]fY`Xf] W]ggY`g
Wc`bbY`Wh]c`b`Zc`f`\ U`Z`W`f`c`g`g`V`U`f`g



DU`Ub`#`<c]gh

&`V`c`i` `c`b`g`X`Y`j` Y`f`c`i`]`U`[` Y` 9`d`c`b`h` `Y`!` H`f`U`j` Y`f`g`Y`
&`@`W`_`V`c`]`g`g`b`[`Y` W`f`U`X` `Y`#`7` f`c`g`g`V`U`f`

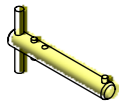
D]c`b`d`c`i` f`j` Y`f`c`i`]`U`[` Y` H`f`U`j` Y`f`g`Y`
7` f`c`g`g`V`U`f`d`]b`

DUHb`
DUX

Ff[`U[Y`Zb
:]bY`UX↑ ga`Ybh

7 \UbXY`Y
H VY

6fcVX`Y #H VY`D]b



DjYX
@[

Hci gXY`f[`U[Y
UX↑ ga`Ybh\`c`Yg

%! `DF 9G9B H5 H€ B `A 5 H F = 9 @ # `9 E | ÷ DA 9 B H D F 9 G 9 B H 5 H€ B `

BC H 7 9`CF ÷ ÷ B 5 @ 9 ; 5 A A 9`K CF?I D

K CF?I D`F 5 B ; 9`CF ÷ ÷ B 5 @ ÷ B G H I 7 H€ B G



&%\$+!K | SBC j %`%

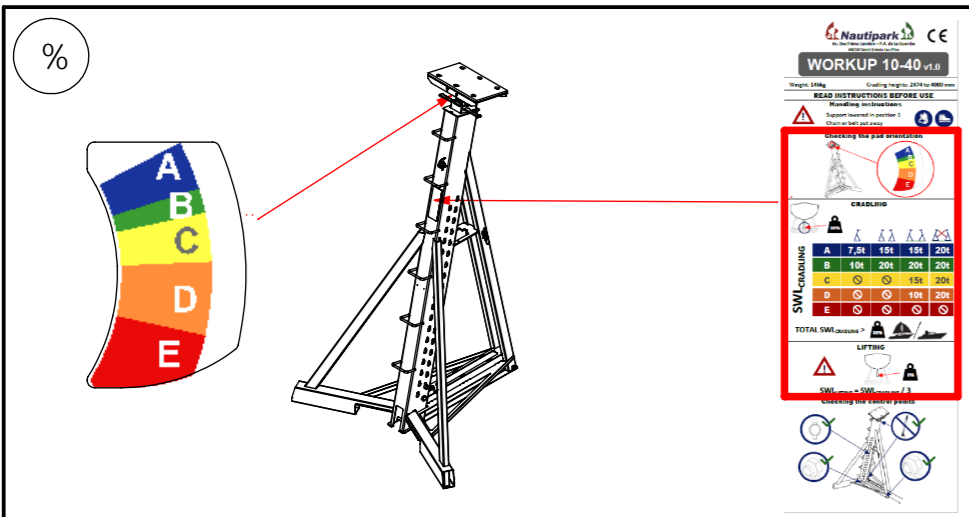
>@! `&) #`%\$#&\$&%

5* | %' \$

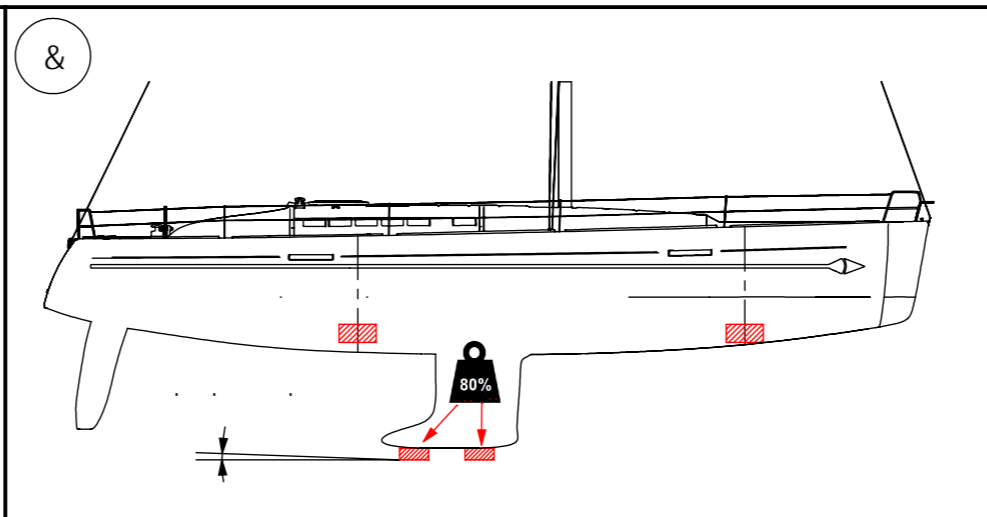


: 91 409 & G F ;

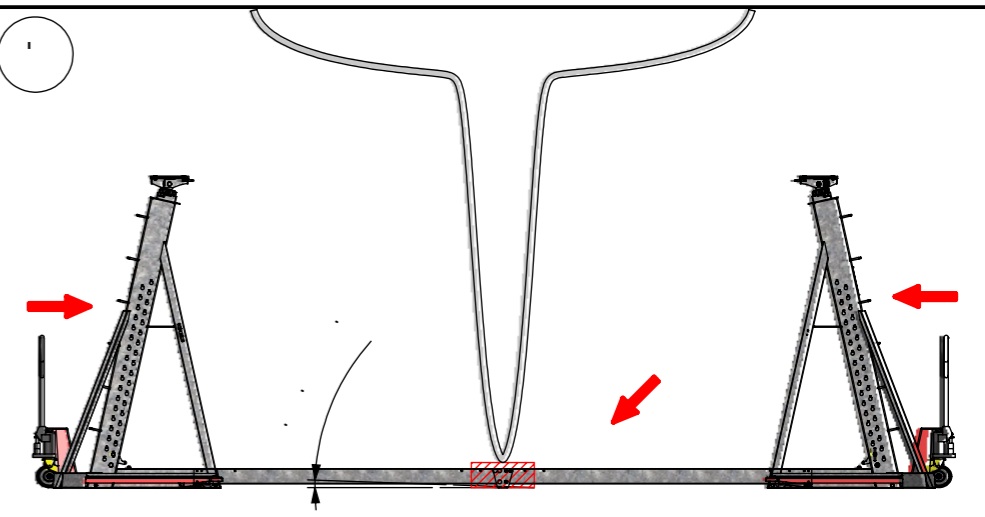
7 Y XcW a YbhYgnU dlc-dfry XY U g:WfY B5I H65F?`-bY dYI h. Hf Wca a I b]i f (XYgnYgnYnci f d f X I h]g]ggg: b U i c f]g]h b : / WfY`



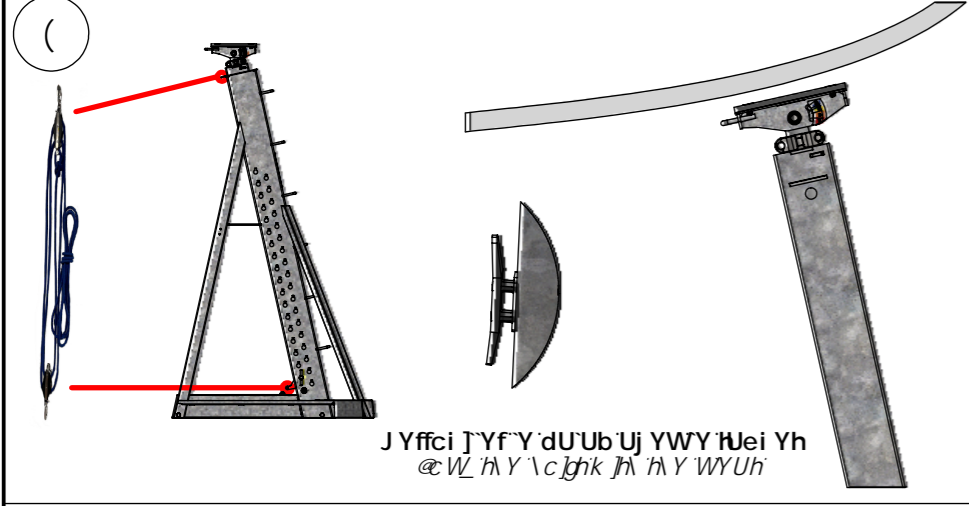
J f f j Y f U W X U f Y a U l j a U Y U i h c f g Y g f f u i h c v c U b h j c j f d U [Y] t
7 \ Y W h Y a U l j a i a c U X c b h Y g W Y f f Y d U [Y] t



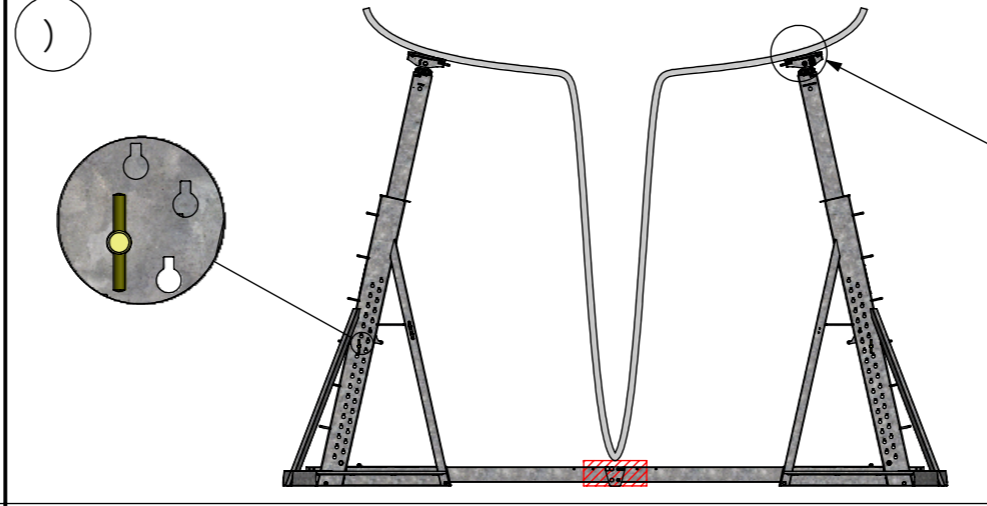
@ V U H U i g f e i j Y Y h r c b Y g X f u d d i j f y d f f Y g
6 c U h c b j r g _ Y Y U b X g d d c f h r c b Y g X Y b h j Y X



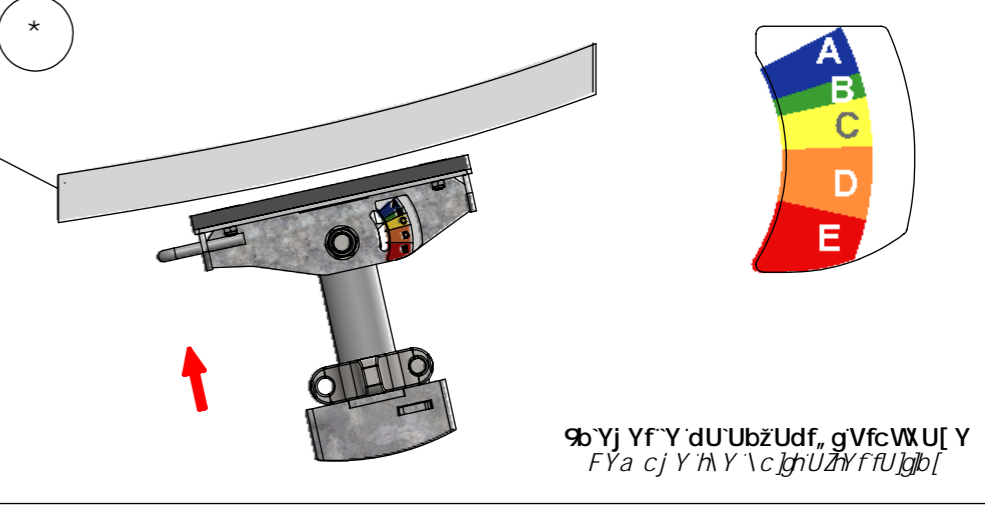
D c g h c b b Y f U h U j Y f g Y h Y g f d c b h Y g
D c g h c b h Y W f c g V U F U b X h Y g l b [Y W U X Y g



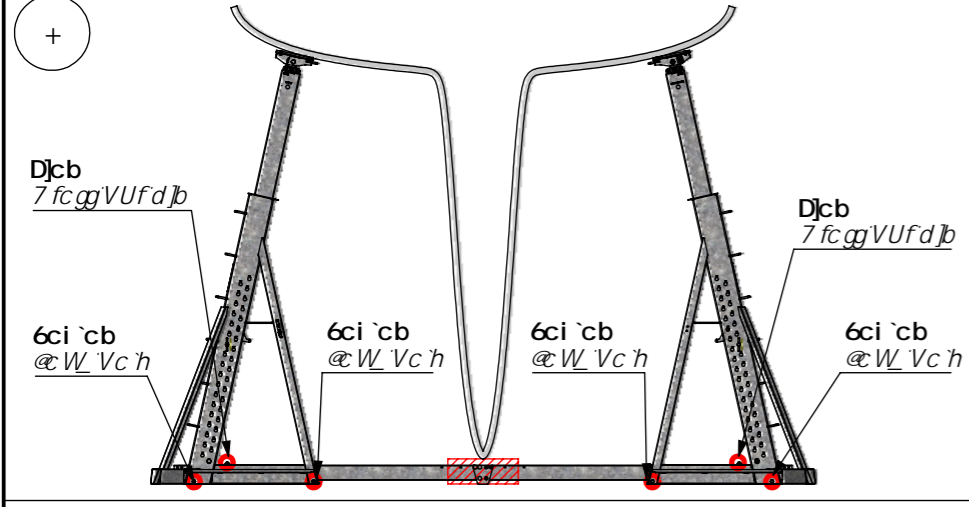
A c b Y f U W X U b X Y Y U j Y W Y d U U b
@ h h Y h i V Y k j h h Y l c j h



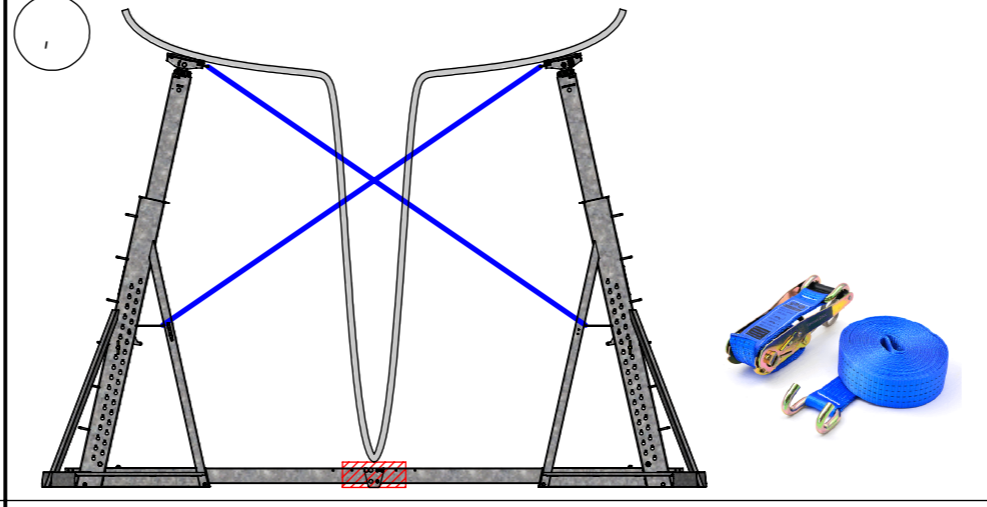
6 f c W X Y f X U b g Y h c i f f [U [Y U X f e i U h Y h d c g Y f U W X U b X Y Y g f U V f c W X Y
h g Y f h h Y h i V Y d j b h Y U d d f c f U h Y l c Y z c W j h U b X d U W h Y h i V Y c b h Y d j b



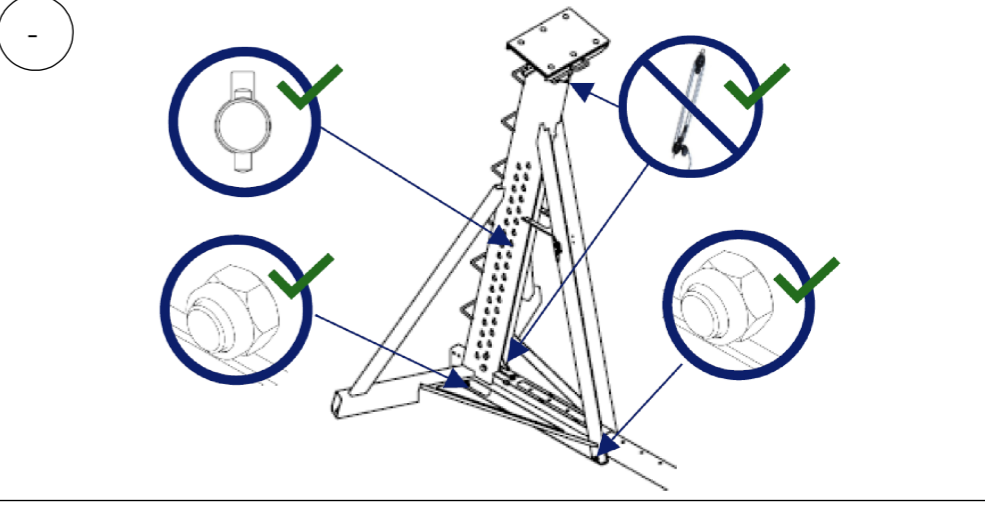
5 d d i m Y f Y d U h j g f U W c e i Y U j Y W Y f f [U [Y Z b j f f j Y f U b [Y X i d U h b
D Y g g h Y d U X c b h Y l i k j h h Y Z b Y U X t g a Y b h 7 \ Y W h Y d U X U b [Y



D U W f Y g V c i c b g Y h Y g d] c b g
D U W h Y d j b g U b X V c h g



G j V Y g c j z j b g U Y f Y h Y b X Y Y g g U b [Y g
z g j b g U Y b Y Y X X z g Y h h Y a c b h Y l U Z W U X X Y U b X h j l h b h Y a



J f f j Y f Y g d c] b h X Y W c b l f Y
7 \ Y h Y W c b l f c d c] b h g

' ! A 9 k C 8 9 8 9 7 5 @ ; 9 # 7 F 5 8 @ B ; A 9 k C 8

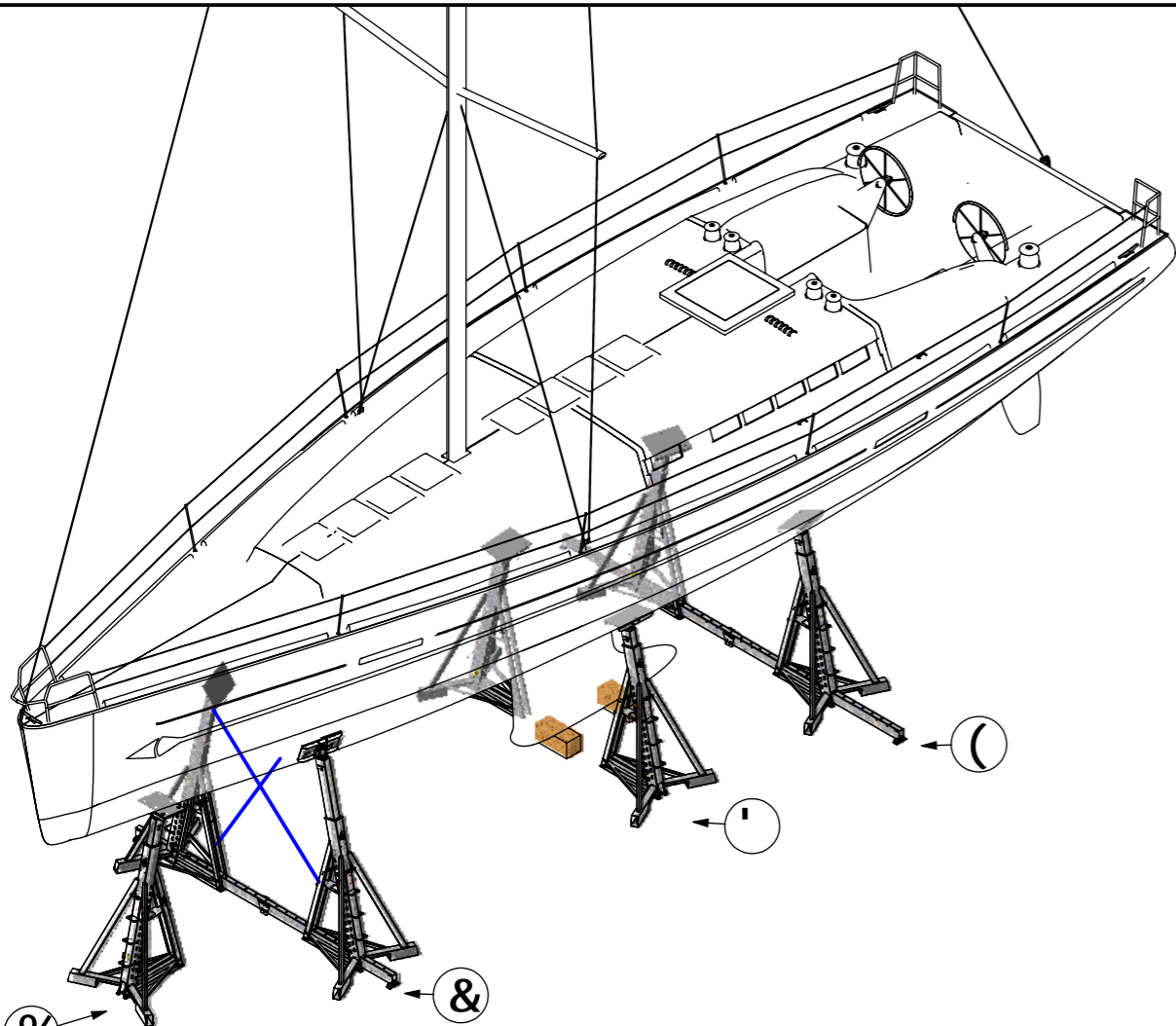
BC H 7 9 C F ÷ B 5 @ 9 ; 5 A A 9 K C F ? I D
K C F ? I D F 5 B ; 9 C F ÷ B 5 @ B G H I 7 H € B G

CE

&%\$+K SBC j %%	
>@! &) #/%\$#&\$&%	
5*	%' \$

Nautipark

7 Y X c W a Y b h Y g U d c a f r Y X Y U g W f Y B 5 I H 6 F ? - b Y d Y l h h Y W a a l b j l f (X Y g h Y h c i f d c X i j g l b g g b U i h g h e b j W Y



9 Ya d'Y'XY'WU[Y'Uj YWK CF?I D'%' \$
7 fUX'j b['YI Ua d'Y'k jh 'K CF?I D'%' \$

WORKUP 10-30 v3

SWL _{CRADLING}	A	7,5t	15t	15t	20t
B	10t	20t	20t	20t	20t
C	10t	15t	20t	20t	20t
D	10t	10t	20t	20t	20t
E	10t	10t	10t	20t	20t

TOTAL SWL_{CRADLING} > 50%

LIFTING

SWL_{CRADLING} = SWL_{CRADLING} / 3
Checking the control points

'GK @ '1 &\$h

WORKUP 10-30 v3

SWL _{CRADLING}	A	7,5t	15t	15t	20t
B	10t	20t	20t	20t	20t
C	10t	15t	20t	20t	20t
D	10t	10t	20t	20t	20t
E	10t	10t	10t	20t	20t

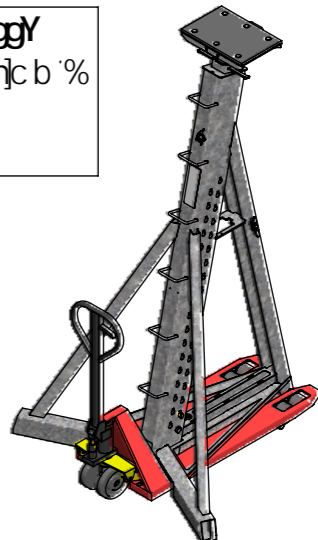
TOTAL SWL_{CRADLING} > 50%

LIFTING

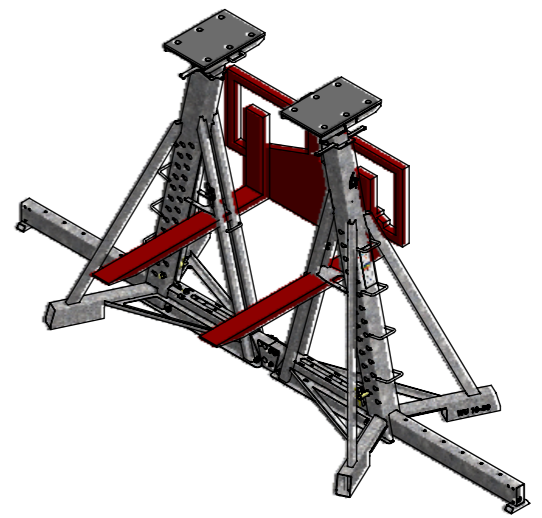
SWL_{CRADLING} = SWL_{CRADLING} / 3
Checking the control points

'GK @ '1 %h

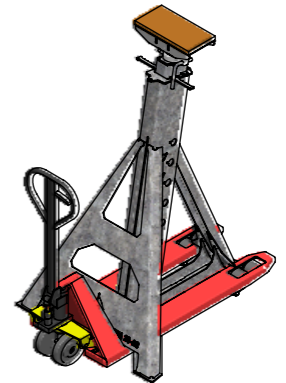
9dcbfj`Y Yb d'cgjhcb VUggY
Gi ddcfh`ck YfYX 'j b' d'cgjhcb %
Gub['YgYb`Yj fYg
G]b['fYa cj YX



A Ubi fYbhjcb Xi 'K CF?I DUj YWZci fWXY'ci 'fUbgdUYHfY'
A cj Y'hY'K CF?I D'k jh 'U'zcf_jhthi W_c'fU'dU`Yh'UW



A Ubi fYbhjcb Xi 'XYa jVYfK CF?I DUj YWZci fWXY'
A cj Y'hY'K CF?I D'\U'Z'WUXY'k jh 'U'zcf_jhthi W



A Ubi fYbhjcb Xi 'K CF?I D'ACHi F'Uj YWZci fWXY'ci 'fUbgdUYHfY'
A cj Y'hY'K CF?I D'ACHi F`k jh 'U'zcf_jhthi W_c'fU'dU`Yh'UW

WORKUP 10-30 v3

SWL _{CRADLING}	A	7,5t	15t	15t	20t
B	10t	20t	20t	20t	20t
C	10t	15t	20t	20t	20t
D	10t	10t	20t	20t	20t
E	10t	10t	10t	20t	20t

TOTAL SWL_{CRADLING} > 50%

LIFTING

SWL_{CRADLING} = SWL_{CRADLING} / 3
Checking the control points

'GK @ '1 '+'h

WORKUP 10-30 v3

SWL _{CRADLING}	A	7,5t	15t	15t	20t
B	10t	20t	20t	20t	20t
C	10t	15t	20t	20t	20t
D	10t	10t	20t	20t	20t
E	10t	10t	10t	20t	20t

TOTAL SWL_{CRADLING} > 50%

LIFTING

SWL_{CRADLING} = SWL_{CRADLING} / 3
Checking the control points

'GK @ '1 &\$h

HC H5@GK @ F58@B; '1
GK @%ŽGK @&ŽGK @ŽGK @1
* &') h

TOTAL SWL_{CRADLING} > 50%

12
1%&) ha UI

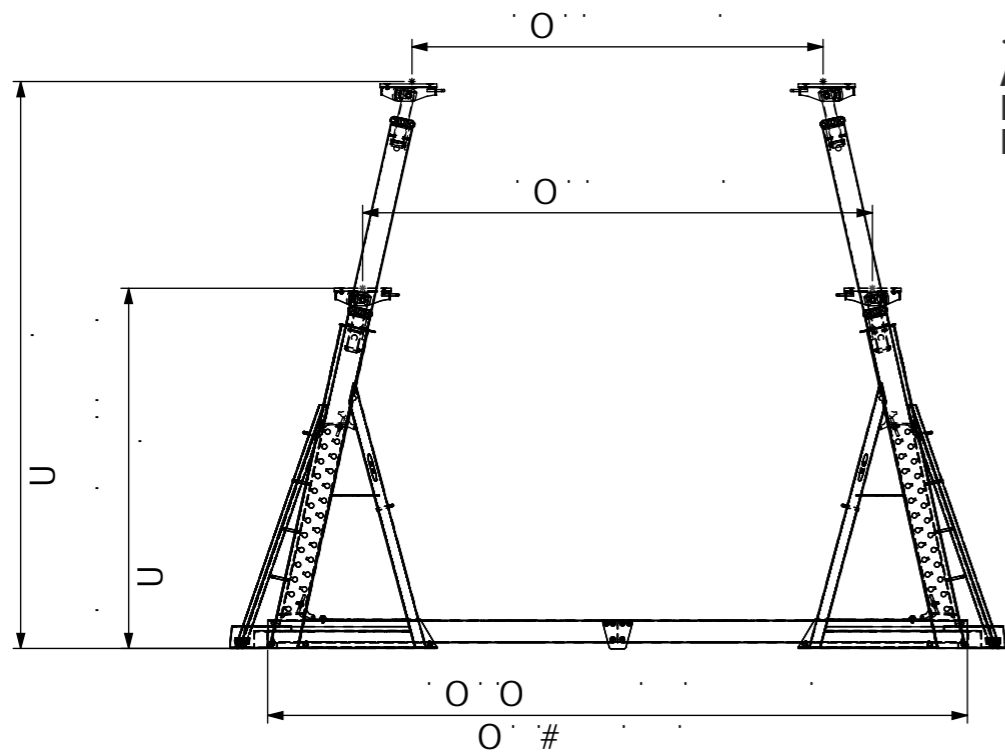
(! '5I HC7C @5BH#GH7 ?9F) ! 'A 5BI H8H€B #' <5B8 @B;

BC H7 9'CF ÷ B5 @9; 5A A 9'K CF?I D
K CF?I D'F5B; 9'CF ÷ B5 @BGFI 7 H€ BG

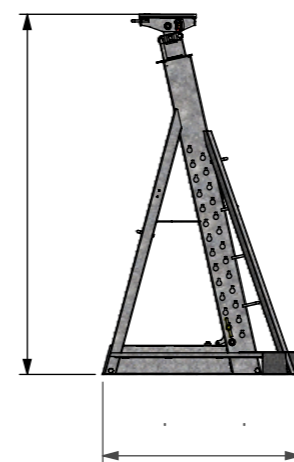
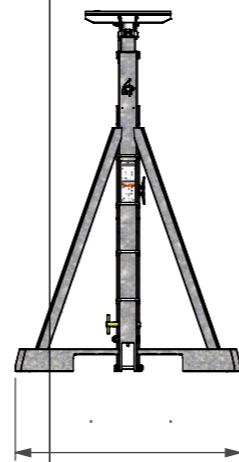
CE

&%\$+K | SBC j %'
>@! '&) #%'\$#&\$&%
5* | %' \$
Nautipark

7 Y XcWa YbhjgU d'cf'fY' XY U g'W'fY B5I H6F?`-bY dYI h. fY Wa a l b]l / (XYgh'fYh'ci f'd'f'Xl jhg]gg'b UI h'fYh'b / fYh'



7\Uf[Y i H Y UI]UY #A UI]a i a 'UI]U`@UX`.%\$h
 <Ui Yi fa UI]a UY #a UI]a i a \Y[\h.' \$\$\$a a
 A UggY fdcbh`Y #g]b[Y WfUX Y a Ugg. - + _[
 HUj YfgY Wci fHY #g]c fh Wfcgg VUfHK %\$! + f(_[E. "'@'1' +\$\$\$a a
 HUj YfgY `cb[i Y #`cb[Wfcgg VUfHK %\$! (- f(%[E. "'@'1'(- \$\$\$a a



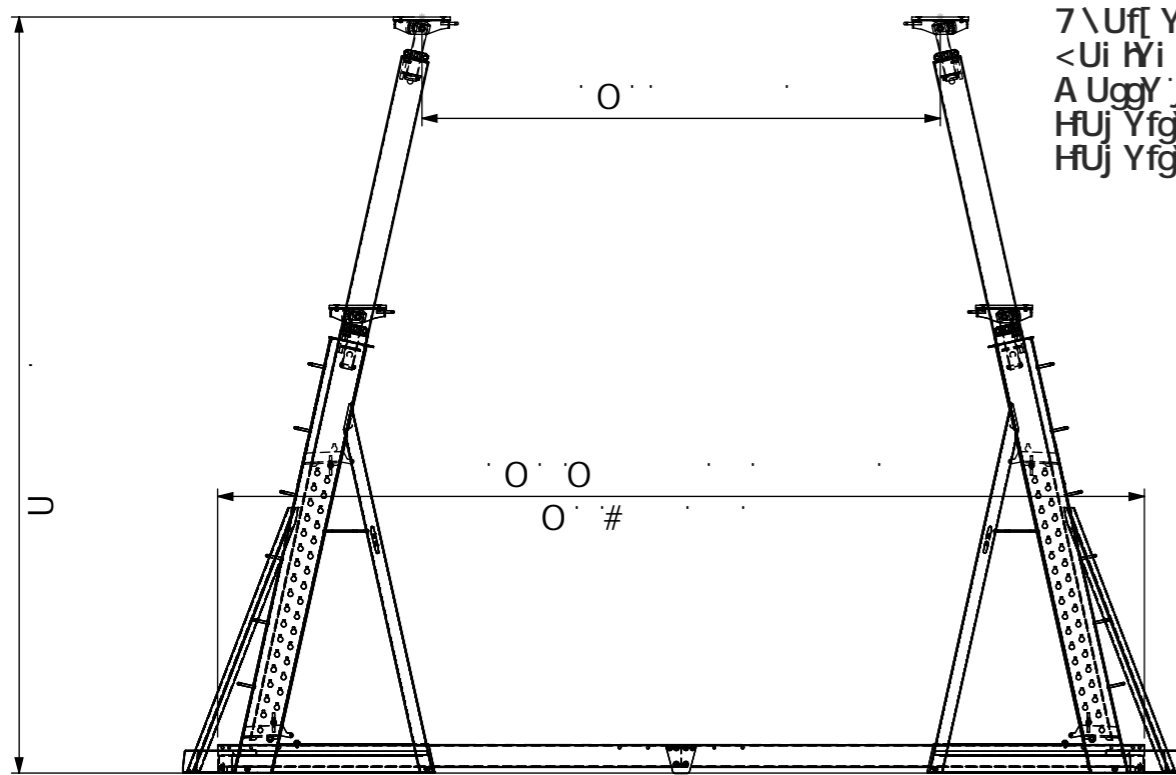
CRADLING

SWL _{CRADLING}	A	7,5t	15t	15t	20t
B	10t	20t	20t	20t	20t
C	⊘	⊘	15t	20t	20t
D	⊘	⊘	10t	20t	20t
E	⊘	⊘	⊘	⊘	⊘

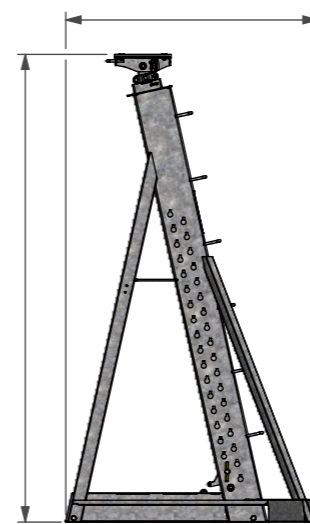
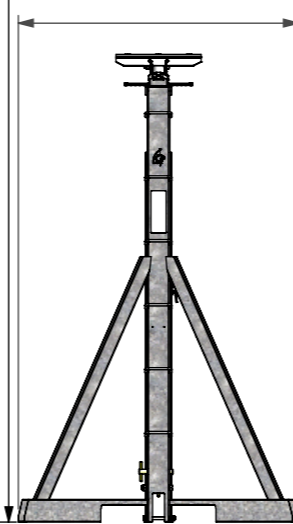
TOTAL SWL_{CRADLING} >

GUb[Yg#g]b[g.
 @U[Yi f A ā@.) \$'a a
 @b[i Yi f A) *cā, "+Z'\$" a
 7\ U[YXYH U] U`]b f Uj Y Eā ^āā [\ / āā A & \$\$\$ XUB
 7\ U[YXYH U] U`]b i g U Y Eā [\ / āā A . ^ . ('\$\$\$'
 XUB
 G< : .) \$ XUB #GH : ('\$\$ XUB
 AU] , f Y Eā āā / āā A Dc nYghf fD9 Gē
 Bcfa Y Eā [\ / A'9 B' %&%) !&

* ! '8CBB99G'H97 <B=I 9G#H97 <B=7 5@85H5GK CF?I D%'\$!' \$j ' "&



7\Uf[Y i H Y UI]UY #A UI]a i a 'UI]U`@UX`.%\$h
 <Ui Yi fa UI]a UY #a UI]a i a \Y[\h.' (\$\$\$a a
 A UggY fdcbh`Y #g]b[Y WfUX Y a Ugg. '% * _[
 HUj YfgY Wci fHY #g]c fh Wfcgg VUfHK %\$! (- f(%[E. "'@'1'(- \$\$\$a a
 HUj YfgY `cb[i Y #`cb[Wfcgg VUfHK %\$!)) f) \$ _[E. "'@'1'))) \$a a



CRADLING

SWL _{CRADLING}	A	7,5t	15t	15t	20t
B	10t	20t	20t	20t	20t
C	⊘	⊘	15t	20t	20t
D	⊘	⊘	10t	20t	20t
E	⊘	⊘	⊘	⊘	⊘

TOTAL SWL_{CRADLING} >

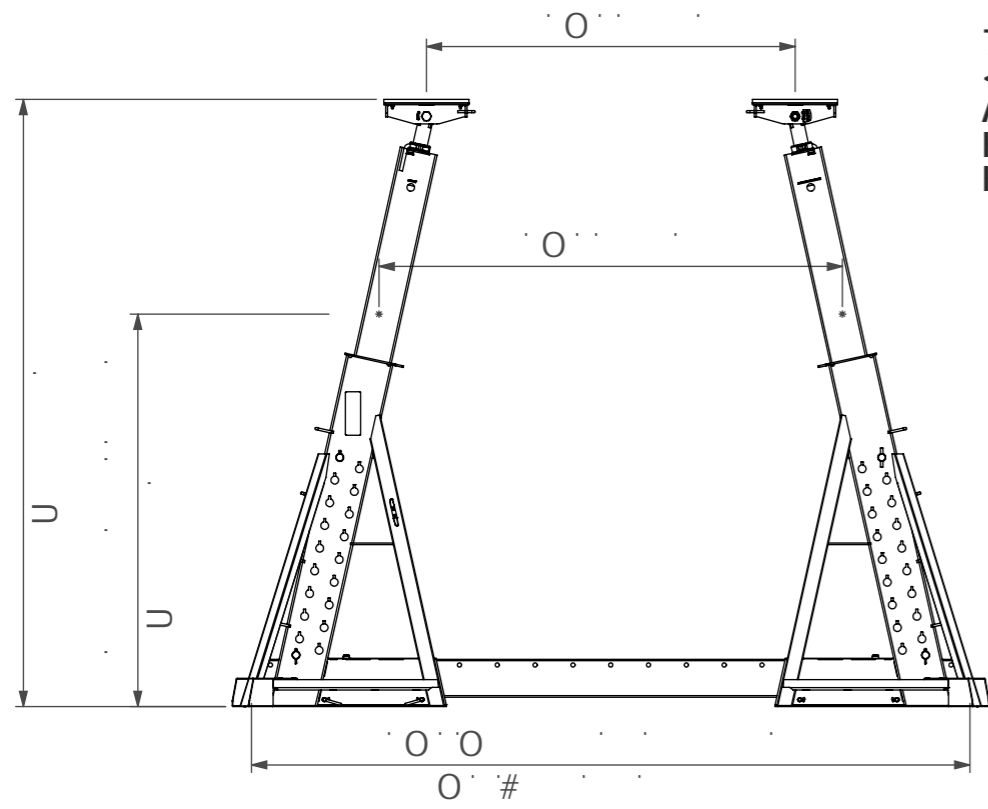
GUb[Yg#g]b[g.
 @U[Yi f A ā@.) \$'a a
 @b[i Yi f A) *cā, "+Z'\$" a
 7\ U[YXYH U] U`]b f Uj Y Eā ^āā [\ / āā A & \$\$\$ XUB
 7\ U[YXYH U] U`]b i g U Y Eā [\ / āā A . ^ . ('\$\$\$'
 XUB
 G< : .) \$ XUB #GH : ('\$\$ XUB
 AU] , f Y Eā āā / āā A Dc nYghf fD9 Gē
 Bcfa Y Eā [\ / A'9 B' %&%) !&

+ ! '8CBB99G'H97 <B=I 9G#H97 <B=7 5@85H5GK CF?I D%'\$! (\$j %'\$

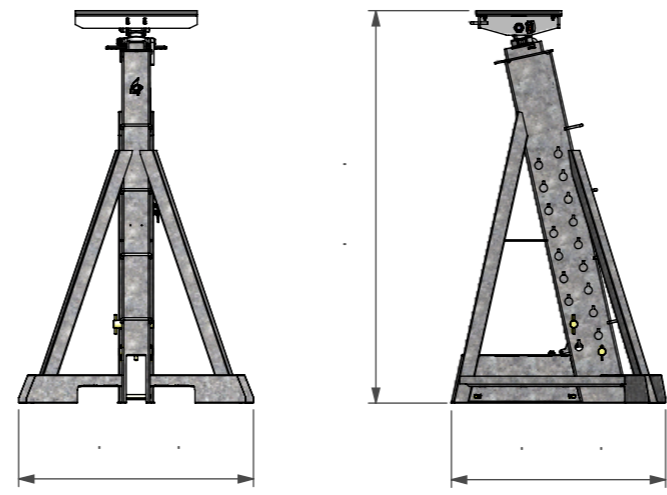
BC H 7 9 C F ÷ ß 5 @ 9 ; 5 A A 9 K C F ? I D
 K C F ? I D F 5 B ; 9 C F ÷ ß 5 @ ß G H I 7 H € B G

CE

&%\$+K SBC j %%	
>@! &) #/%\$#&\$&%	
5*	%' \$



7\Uf[Y i H Y UI JU Y # A UI ja i a 'UIJU' @ UX: &\$h
 <Ui Yi f a UI ja UY # a UI ja i a \Y[\h. ' &%&a a
 A UggY f dcbh Y # g]b[Y WfUX Y a Ugg. &%&_
 HUj YfgY Wci fHY # g' c fh Wfc gg VUfHK &\$!' , fj * _ [L: "'@'1' , \$\$\$a a
 HUj YfgY `cb[i Y # `cb[Wfc gg VUfHK &\$!' \$ fV%&_ [L: "'@'1') \$\$\$a a



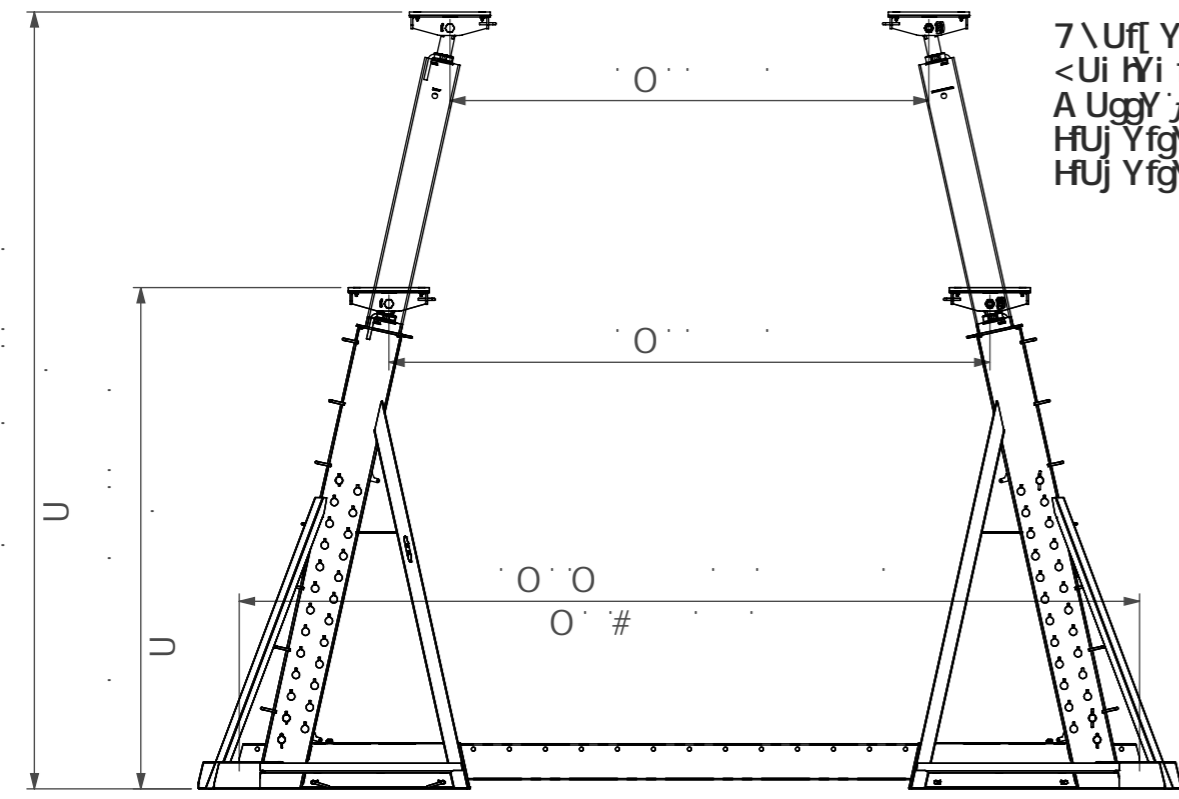
CRADLING

SWL CRADLING	A	15t	30t	30t	40t
	B	20t	40t	40t	40t
	C	⊘	⊘	30t	40t
	D	⊘	⊘	20t	40t
	E	⊘	⊘	⊘	⊘

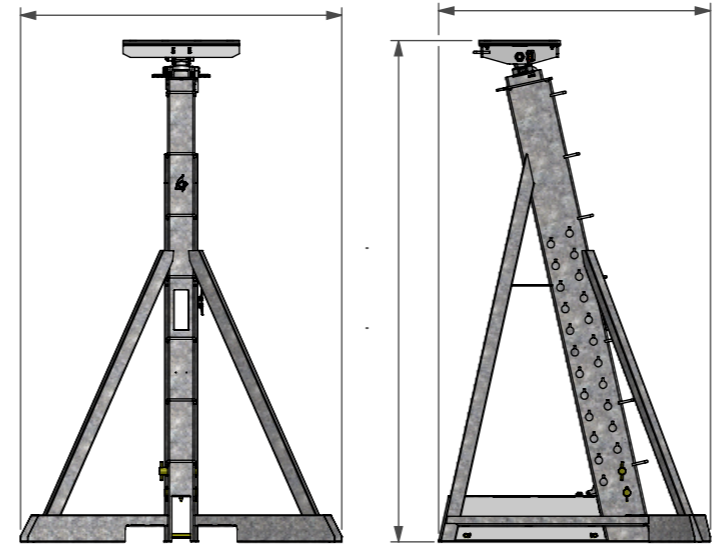
TOTAL SWL_{CRADLING} > 50%

GUb[Yg # g]b[g:
 @U[Yi f A a @ +) a a
 @b[i Yi f A) * @A , ' Z \$) a
 7\ Uf[YXYH Uj Uj] b f Uf Y A a A [\ /] a a A) \$\$\$ XUB
 7\ Uf[YXYH Uj Uj] Yb i gU Y A [\ /] a a A . ^ . % \$\$\$
 XUB
 G< : .) \$ XUB # GH : .) \$ \$ XUB
 A Uj , f Y A a a A Dc mYghf fD9 GL
 Bcfa Y A [\ /] A 9 B % & %) ! &

, ! ' 8CBB99G'H97 <B=I 9G#'H97 <B=7 5@85H5GK CF?I D'&\$!' &j &'\$



7\Uf[Y i H Y UI JU Y # A UI ja i a 'UIJU' @ UX: &\$h
 <Ui Yi f a UI ja UY # a UI ja i a \Y[\h. (' %) a a
 A UggY f dcbh Y # g]b[Y WfUX Y a Ugg. &+ + _
 HUj YfgY Wci fHY # g' c fh Wfc gg VUfHK &\$!' \$ fV%&_ [L: "'@'1') \$\$\$\$a a
 HUj YfgY `cb[i Y # `cb[Wfc gg VUfHK &\$!' + * fV% (_ [L: "'@'1' + * \$\$\$a a



CRADLING

SWL CRADLING	A	15t	30t	30t	40t
	B	20t	40t	40t	40t
	C	⊘	⊘	30t	40t
	D	⊘	⊘	20t	40t
	E	⊘	⊘	⊘	⊘

TOTAL SWL_{CRADLING} > 50%

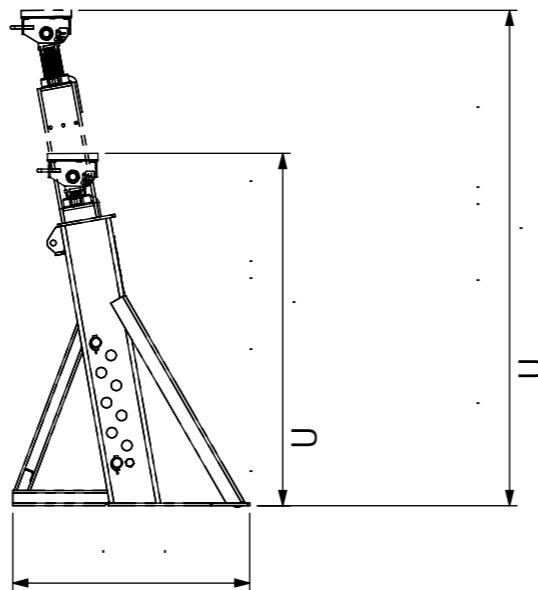
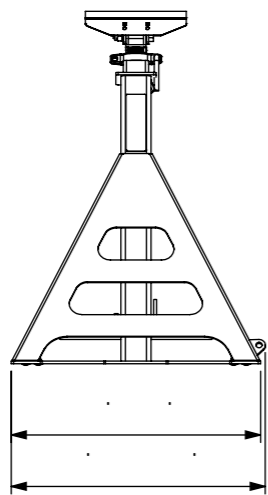
GUb[Yg # g]b[g:
 @U[Yi f A a @ +) a a
 @b[i Yi f A) * @A , ' Z \$) a
 7\ Uf[YXYH Uj Uj] b f Uf Y A a A [\ /] a a A) \$\$\$ XUB
 7\ Uf[YXYH Uj Uj] Yb i gU Y A [\ /] a a A . ^ . % \$\$\$
 XUB
 G< : .) \$ XUB # GH : .) \$ \$ XUB
 A Uj , f Y A a a A Dc mYghf fD9 GL
 Bcfa Y A [\ /] A 9 B % & %) ! &

- ! ' 8CBB99G'H97 <B=I 9G#'H97 <B=7 5@85H5GK CF?I D'&\$!' (' j &'\$

BC H 7 9 C F = B 5 @ 9 ; 5 A A 9 K C F ? I D
 K C F ? I D F 5 B ; 9 C F = B 5 @ B G H I 7 H € B G

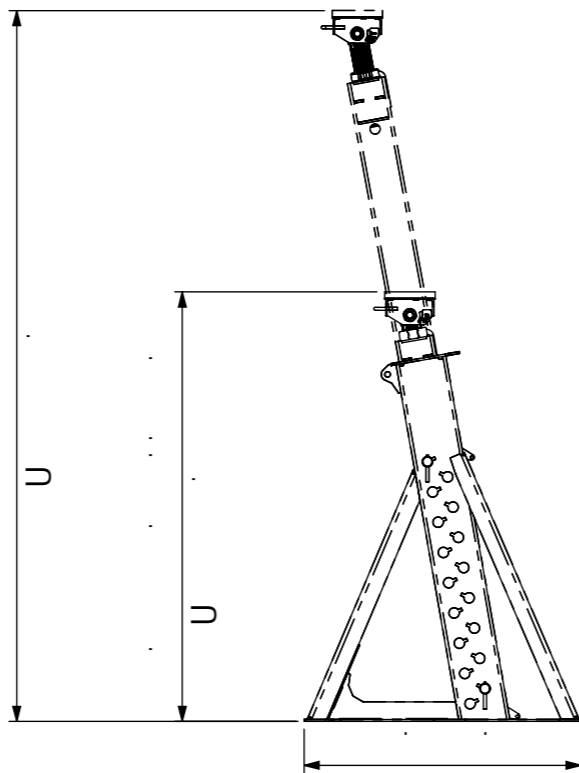
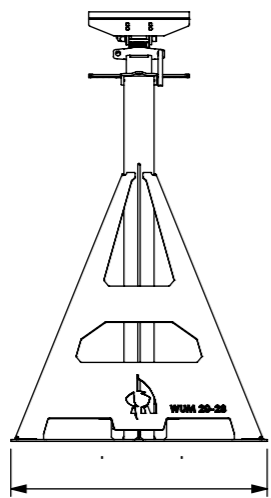
CE

&%\$+K SBC j %%
>@! &) #/%\$#&\$&%
5 * %' \$



7\Uf[Y i H Y UI]U Y # A UI]a i a 'UI]U '@ UX'. &\$h
 <Ui H Yi f a UI]a U Y # a UI]a i a \Y] [\h. % *) a a
 A Ugg Y f dcb h] Y # g b [Y W f U X Y a Ugg. %) % _ [

%\$! '8CBB99G'H97 <B-E I 9G#'H97 <B-7 5@85H5GK CF?I D'A CHA F '&\$! &\$ j %&



7\Uf[Y i H Y UI]U Y # A UI]a i a 'UI]U '@ UX'. &\$h
 <Ui H Yi f a UI]a U Y # a UI]a i a \Y] [\h. & \$ \$ a a
 A Ugg Y f dcb h] Y # g b [Y W f U X Y a Ugg. %) _ [

%%! '8CBB99G'H97 <B-E I 9G#'H97 <B-7 5@85H5GK CF?I D'A CHA F '&\$! &, j &'\$

BC H 7 9 C F ÷ ß 5 @ 9 ; 5 A A 9 K C F ? I D

K C F ? I D F 5 B ; 9 C F ÷ ß 5 @ ß G H I 7 H € B G



&%\$+!K | SBC j %'%

>@! '&) #/%\$#&\$&%

5* | %' \$



: 91 489, 'G F,